

Customer :

customer

Customer part :

customer part

Comment :

Comment

S1=0.75

S2=0.47

Tmax=313

Tp S2=352.0

PI=0.62

HI=37

Sample =2930.4

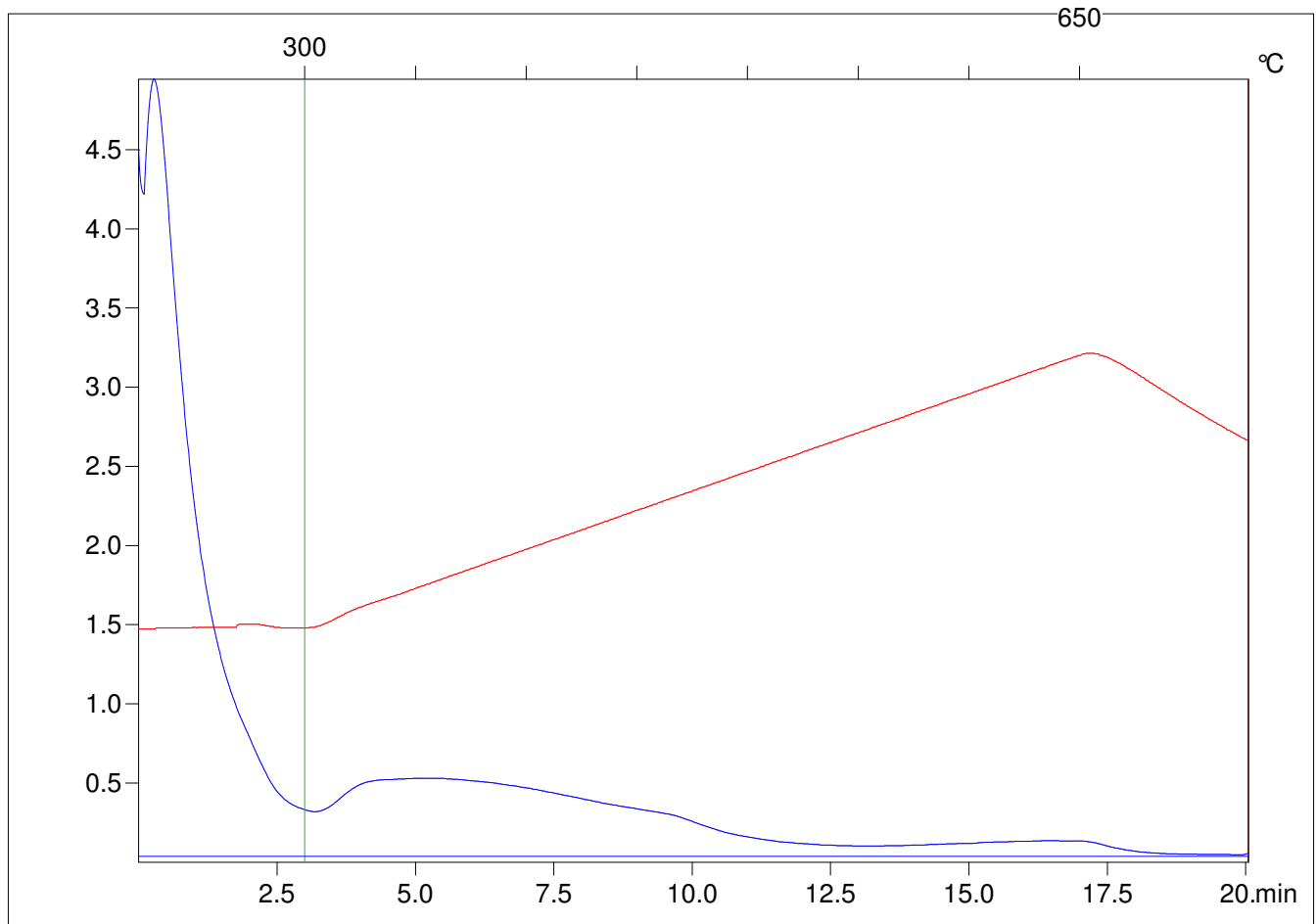
Method =Bulk Rock

Cycle=Basic

KFID(10*9)=1550

Qty =70.5

TOC=1.27



C:\VINC\PK130315\PK031.R00 : FID pyrolysis graphic

State

Pyro Status

Oxi Status